

3502

A person is wearing a white protective suit with blue accents, including a hood, goggles, and a mask. The suit has a blue vertical stripe down the center and blue horizontal stripes at the neck and waist. The person has their arms crossed. The background is dark with a hexagonal pattern and green light effects. The number '3502' is displayed in large white font at the top.

**Disposable Sterilized
Protective Clothing**

Disposable Sterilized Protective Clothing



- Provide barrier and protection for medical staff to contact potentially infectious patients' blood, body fluids, secretions and the particles in the air.

Certified in acc. with

EN 14126

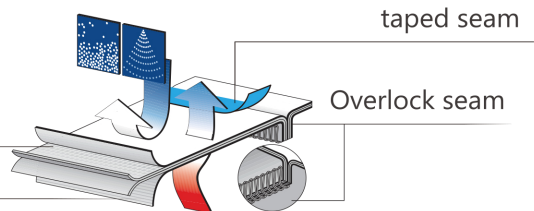


GB 19082-2009

CFDA-2020001



microporous polyethylene film
polypropylene spunbond (SMS)

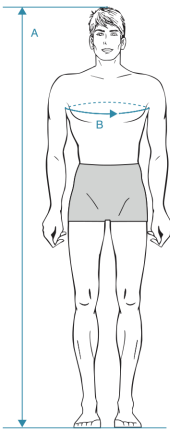


Size

• How to make the right choice

To ensure a perfect fit and to guarantee maximum safety when working hazardous substances, the coveralls are available in a wide range of sizes. The table shows the body measurements and the corresponding sizes. These size definitions are based on actual body measurements taken while wearing underwear but without wearing shoes.

These sizes differ from standard clothes sizes, so please always select coveralls according to your actual body measurements and not your usual clothes sizes!



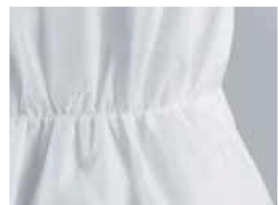
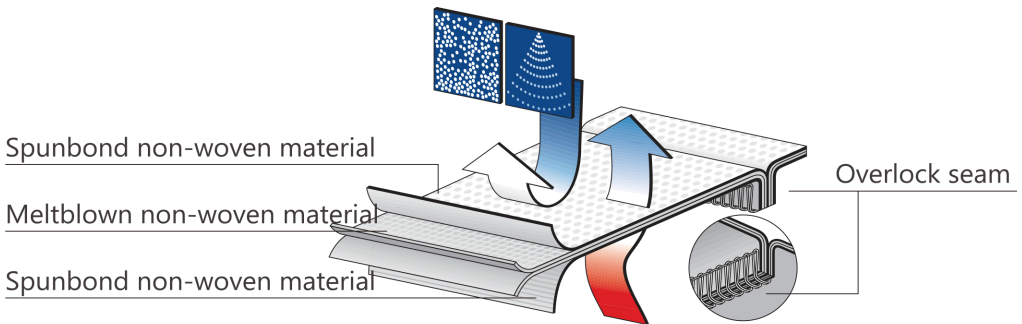
| Size | Chest | Sleeve Length | Cuff | Hem |
|-----------|-------|---------------|------|-----|
| 160 | 120 | 84 | 18 | 24 |
| 165 | 125 | 86 | 18 | 24 |
| 170 | 130 | 90 | 18 | 24 |
| 175 | 135 | 93 | 18 | 24 |
| 180 | 140 | 96 | 18 | 24 |
| 185 | 145 | 99 | 18 | 24 |
| Tolerance | ±2 | ±2 | ±2 | ±2 |

Noted

- 1 Before used, please select the appropriate protective clothing model according to the back of packaging bag.
- 2 Before used, please check whether the package is complete, and make sure there is no damage, air permeability, etc.
- 3 Put on, take off protection clothing should be in the corresponding specified area, and used the disinfection wash hands.

Product composition:

- It is sewn and processed with non-woven+PE and breathable composite membrane as rawmaterial. The protection overall make up of hooded jacket and trousers.The fact mask,cuffs,waist and ankle place all adopt elastic dealing.



Elasticated waistband for a perfect fit.



Sleeve tight desgin for firmly securing the sleeves.



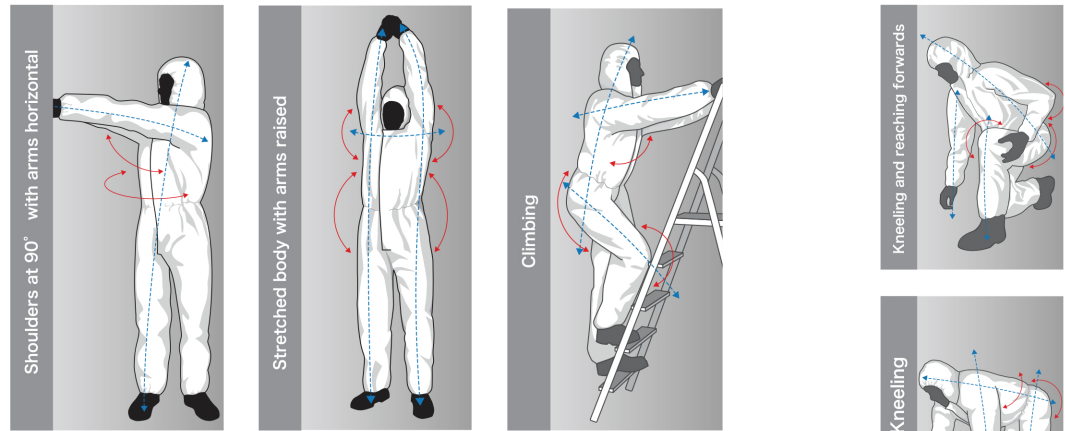
Added gusset section in the crotch area for increased freedom of movement



Zipper with adhesive placket for added safety.

Disposable Sterilized Protective Clothing

(Instructions for use)



1 Disposable Sterilized Protective Clothing

Prior to use it is essential to check the protective coverall for any damage e.g. broken seams, defective zipper closure or other visible defects which may impair its protection levels.

2 Storage

Storage Conditions: It is recommended to store in a cool dry, ventilated and non-corrosive place.

